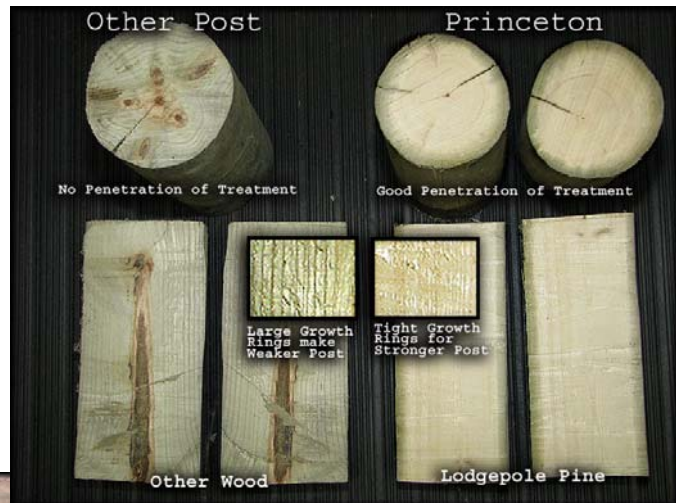


Wood Trellis Posts

Today with climbing material and labor costs, it's critical that you get the most value for your dollar. When it comes to your trellis

At OVS we exclusively supply CCA-treated and kiln dried posts from Princeton Wood Preservers. It all starts with quality wood. Princeton only uses lodge pole pine, a renewable resource grown specifically and logged for Princeton. Before treatment, posts are kiln dried for optimum penetration of preservative and longevity. This also prevents any moisture from getting trapped in the interior of the wood, allowing for core decay. The posts are pressure treated to 4 lbs/cubic ft. The post is then moved back to the kiln for fixation. This extra step ensures that the post fully retains treatment and minimizes the possibility of any leaching of chemicals into the soil.



Damage Caused by Insect Infiltration of Improperly Treated Post

An entire local vineyard trellis system was decimated by an infestation of wood boring insects. Damage could have been prevented with properly treated posts.



Princeton Wood Preservers posts recently removed from the ground. Originally installed between 1982 to 1989. Making these posts 19 to 26 years old.

OVS was invited out to inspect Princeton Wood Preservers posts that had been removed from a vineyard in Dundee, Oregon. The site was being readied for replanting. The posts were in amazing shape (see above). Other than staining from the Red Hills soil they were in, there was almost no sign of deterioration. Many post diameters and lengths available, please inquire.